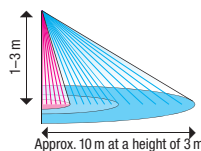
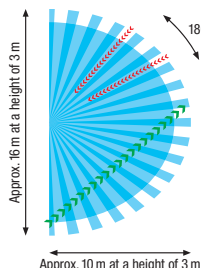


DETECTION AREA



Installation height	Dia. for movements
1.0 m	6 m
1.5 m	7 m
2.0 m	8 m
2.5 m	9 m
3.0 m	10 m



- **Optimum range**
If several zones are crossed
- **Reduced range (approx. -50%)**
With movements within a single zone
- **Movement zone (walking area)**
Reacts to larger walking movements

Swiss Garde 300 D IR

Movement detector for flush-mount wall installation

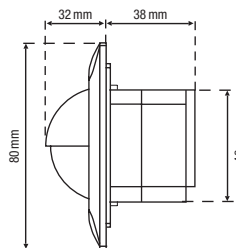
- Movement detector for flush-mount wall mounting
- Ideal above doors and elevator doors or for use in switching programs
- Adjustment of all parameters LUX/SENS/Time manually or via P-IR remote control
- Optional mini remote control On/Off/Automatic
- Additional input for manual switching
- Test function with P-IR remote control
- Integrated short-pulse function with selectable pause time, adjustable by P-IR remote control
- ON/OFF/AUTO and holiday function etc. via P-IR remote control
- Timer control with integrated short impulse function for the control of staircase lighting systems and gongs etc.
- Integrated high power relay with high electronic ballast switching power

Characteristics/installation

The Swiss Garde 300 D IR detects horizontally and vertically with 3 pyro-sensors. It is thus suitable for installation at heights of 1–3 m and offers optimum detection characteristics at great heights above doors and entranceways with the vertical detection. It fits in all size I flush-mount back boxes and is suitable for direct switching of lights and also for the control of relays and stairwell lighting systems, with its standard timer control and the integrated short-pulse function.

TECHNICAL DATA

Nominal voltage:	230V/50 Hz
Switching power:	2300W/10A resistive (cos φ 1.0) 1150VA/5A inductive (cos φ 0.5) Single illuminant electronic ballast: 30x 18W, 25x 36W or 20x 58W max. Twin illuminant electronic ballast: 20x (2x 18W), 15x (2x 36W) or 10x (2x 58W) max.
Detection angle:	180°
Detection range:	Approx. 10 m radius at a height of 3 m
Installation height:	Approx. 1–3 m
Lux level control:	5–2000 lx (or current lux value per remote control)
Timer control:	Short impulse (approx. 1 s), approx. 10 s to 20 min
Protection class:	IP20 internal installation, class II
Temperature range:	-20 to +40 °C
Dimensions:	80x80x32 mm (visible dimensions)
Conformity, test mark:	TÜV Süd, CE



Description	Color	Art.-No
Swiss Garde 300 D IR	white	25290
Swiss Garde 300 D IR	black	25390
Swiss Garde 300 D IR	gray	25370

See accessories catalog Züblin



Züblin Elektro GmbH Marie-Curie-Strasse 2 | D-79618 Rheinfelden-Herten
Phone +49 (0) 7623 96697-0 | Fax +49 (0) 7623 96697-7 | www.zublin.de